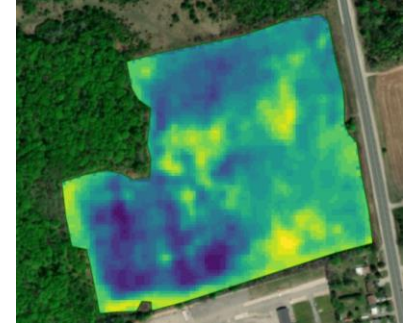




Precision Agriculture & Imagery

The use of precision technology can go hand in hand with nutrient management when considering the 4R principles of right time, rate, source, and placement. The weather conditions in the fall of 2021 and over the winter have left some questions on the viability of winter wheat stands. Getting out and walking fields once the snow has dissipated and the winter wheat begins to emerge from dormancy is vital to making decisions on the viability, potential yield, and management decisions to follow. The use of a satellite imagery tool such as Granular Insights can be helpful to notice the discrepancies in a plant stand and plant health that may not be seen during a typical field scout. Enter, the concept of variable rate nitrogen based off of a data layer such as satellite imagery. This technology along with our ability to write prescription-based applications and apply using our new high clearance Rogator equipped with an Amazone fertilizer box allows us to apply nitrogen to the crop with an unmatched degree of accuracy. These techniques are all a part of our precision acre program at Holmes Agro and are designed to deliver high yielding, high quality nutrient program with both economic and environmental sustainability in mind. Talk with your crop advisor about our program and take your wheat production to the next level. There's no time like the present!



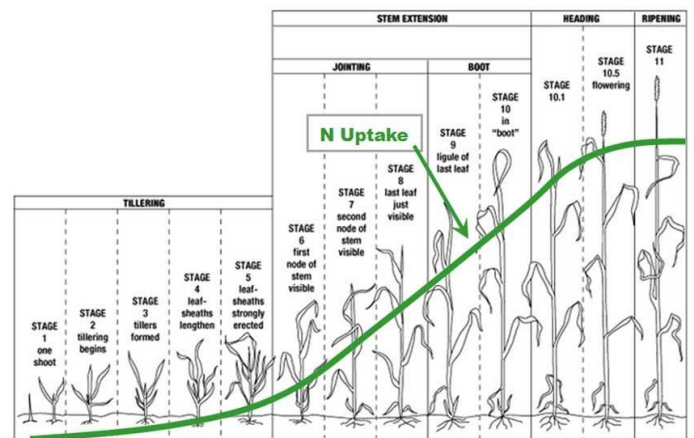
Considering Early Nitrogen on Wheat

The infamous early spring question for winter wheat growers.....what is the correct N rate to apply to achieve maximum economic yield response, and when should I apply N to my winter wheat fields? Primarily it depends on "mother nature" and the environmental conditions she instills during the spring and summer of 2022. Though environmental conditions are beyond our control, there are many other factors that have an impact on maximizing wheat yields and are within our management control.

A planned early N application encourages a split application recommendation to reduce the risk to the environment and improve nutrient use efficiency. The window of opportunity to apply N early on frost but not frozen ground is quite small and takes planning and coordination and most importantly a willing operator because the risk of getting stuck is usually quite high.

Some things to consider in balancing your fertility program:

- ✓ Nitrogen availability is enhanced with the addition of Sulphur, and we find a minimum 7:1 ratio as a good agronomic balance.
- ✓ Wheat needs approximately 60% of its N requirement from the start of stem elongation to maturity. The use of a split application, where nitrogen would get applied (spoon fed) to the crop two or three times throughout the growing season helps with risk mitigation from weather events and offers ability to fine tune each pass with crop demands and yield potential, or consider including ESN technology for 'timed release' nitrogen to help to control the N supply throughout the growing season.
- ✓ The plant staging and stand in the spring should also be considered. The general rule of thumb is the later you plant your wheat, and the fewer tillers you have going into dormancy, the earlier, and harder you are going to have to push your nitrogen applications in order to encourage the crop to tiller out and fill in. Conversely, earlier planted wheat tends to tiller more in the fall so applying a large amount of available N, early spring can create issues with lodging, which will also be determined by variety.



Source: S.A. Ebelhar, University of Illinois.

As we move closer into spring this year there will always be things, we will have no control over, why not utilize and manage what you DO have control over so you can maximize your yield potential in 2022. Visit with your Holmes Agro rep for further details about winter wheat nutrition and be a step closer to executing your plans towards a profitable wheat harvest.

Weren't Able to Attend Our Virtual Next Level AG Series?

Make sure to check out Holmes Agro's YouTube channel if you were unable to attend our 2nd annual Next Level Ag Series I & II that was held on March 3rd. We will be posting the recording to each of the presentations in early March!

https://www.youtube.com/channel/UCf-e3PT_8u4ICtSZtGwm0Vg/featured

It is also not too late to register for the Holmes Agro Next Level Ag Series – Horticultural Edition being held on March 8th @1-3:30pm via Zoom. Reach out to your Holmes Agro rep to register or scan the QR code.



Part 1: 4R Principles

Holmes Agro is a strong believer in the "4R" approach to nutrient management. One of these components is using the "Right Source", a key decision in any fertilizer recommendation and a current soil test will help identify areas of strengths and improvement required. Understanding how different nutrients are available within the soil (mobile vs immobile) and how this impacts plant uptake impacts decisions on what products are best suited for that field and crop. The ability to apply micronutrients either as a coating or within a homogeneous prill allows for a more even distribution of key micronutrients for all plants, and often at a lower rate of application because of placement. There are several strategies available for nitrogen applications to include inhibitors and slow-release products for risk mitigation of off sight movement and environmental losses. Technology advancements in fertilizer products and application offers an improved system management. Talk to your Holmes Agro Agronomist to discuss what solutions best suit your needs.



Seed Deliveries 2022

The first day of Spring is less than a month away! Stefani will be calling to schedule deliveries this month with your seed orders. Please let us know if you are able to take an early delivery. Delivery will be free of charge up to March 31st, 2022 for all completed deliveries. Happy planting!

Holmes Agro Credit Policy

Our credit terms are net 20th day of the following month for eligible charge accounts, as per our credit application and agreement. On-Line payments are available at the following financial institutions: Bank of Montreal, CIBC, Meridian Credit Union, National Bank, RBC Royal Bank, Scotiabank and TD Canada Trust.

Third Party Loan Due Dates:

- All eligible crop input purchases between Sep 01 /20 and Aug 31 /21 have a repay date by March 15th, 2022 for FCC Crop Input financing.
- There is no penalty if you pay early, and funds become available once again.
- If you have any questions, please feel free to contact us.



Calendar Submissions

Every year we provide a calendar full of grower pictures throughout the year - all thanks to your great submissions! We want to see your best winter and spring pictures. It's never too early to send in your 2023 calendar submission photos! Photo submissions can be sent to nicole@holmesagro.com or laura@holmesagro.com

Upcoming Events

March 14th & 15th – Grower Pesticide Course, St. Patrick's Hall, Stayner, ON

March 15th – FCC 2021 Farm Inputs Loan Due

March 20th – First Day of Spring

March 22nd – Grain Farmers of Ontario March Classic

March 26th – Grower Pesticide Course, Holmes Agro, Orangeville, ON

Jeff Shane Nicole Will Laura Greg Taylor Scott John Lydia Dennis Brooklyn Travis

